

**LET'S MAKE A SCENE!**

**NORTH STAR FILM ALLIANCE**



# GET WILD!

Eye-catching undiscovered locations shaped by the seasons, expeditious cash-rebate and native film professionals with sharp instincts. A down-to-earth approach to filmmaking that stands out.



# QUOTES

They came and this is what they say about us:

## ESTONIA

**Director Christopher Nolan** (director, writer, producer) known for Dunkirk (2017), Interstellar (2014), Inception (2010), The Dark Night (2008):

“I am extremely grateful to the government and people of Estonia, who welcomed us and enabled us to film in multiple locations in their beautiful country. It was an honor to shoot at Tallinn’s historic Linnahall and the Laagna Tee was the perfect location to shoot what was an incredibly demanding stunt sequence. The support of the mayor of Tallinn, as well as the public, was integral to our accomplishing it and the results are on the screen.”

## FINLAND

**Director Siddharth Anand** (director and writer), known for War (2019), Hello Greetings (2005) and Rambo (2020):

“I wanted snow, just endless snow. And from a cinematic point of view, the snow and especially the trees with such beautiful light falling on them at any time of year, it’s just too gorgeous. And the unparalleled visuals we found in Finland were like a director’s dream.”

## LATVIA

**Director Yoon Je-kyun**, known for Tidal Wave (2009) and Ode to My Father (2014):

“The production department and director’s department searched through the world looking for the preserved early 1900s look, and we found it in Latvia, one of three Baltic states.”

# INDEX

<b>One Alliance to Connect You in Three Countries</b>	<b>7</b>	<b>Era Specific</b>	<b>61</b>
<b>North Star Film Alliance</b>	<b>8</b>	UNESCO Heritage Old Towns	70
<b>You Are Here Sooner Than You Think - The NSFA Countries</b>	<b>9</b>	Manors and Palaces	76
<b>Cost-Effective Production</b>	<b>10</b>	Medieval Castles	84
Top-Notch Technology	11	Soviet Heritage	90
Experienced Film Professionals	12	<b>Four Seasons</b>	<b>96</b>
Location Scouting Services	14	<b>Climate</b>	<b>98</b>
Production Services	15	<b>Daylight Hours in Summer and Winter</b>	<b>100</b>
Studios	16	<b>Practical</b>	<b>102</b>
<b>Cash Rebate – Fast and Easy</b>	<b>22</b>	About the Region	103
<b>Locations</b>	<b>24</b>	Infrastructure	104
Diverse and Unique Nature	26	Permits and Visas	105
Famed for Peace and Quiet	30	Transportation	105
Snow and Adventure	32	Accommodation	107
Lakes	34	Food & Catering	108
Seaside	36	<b>Public Film Funding for Co-Productions</b>	<b>110</b>
Islands	38	<b>Film Industry and Commissions in the Region</b>	<b>112</b>
Desolate Landscape	40	<b>Production Companies</b>	<b>116</b>
Forest and Countryside	42	<b>Main Film Festivals and Industry Events</b>	<b>118</b>
Northern Lights	44	<b>International Productions in the NSFA Region</b>	<b>120</b>
Architecture for Every Scene	47	<b>Contacts</b>	<b>122</b>
Modern & Mixed Architecture	49	<b>Photo Credits</b>	<b>123</b>
Industrial	56	<b>In cooperation with European Union and Interreg Central Baltic</b>	<b>124</b>





# ONE ALLIANCE TO CONNECT YOU IN THREE COUNTRIES

The North Star Film Alliance leads you to versatile locations, established film industry professionals, and effective incentive systems in three Northern European countries - Estonia, Finland and Latvia. Each unique, yet united in their versatility and shared values.

We form one direct link to production solutions selected from a well-curated services network and governmental organizations.

Stunning scenery from natural to man-made locations, treasures from the Arctic regions to Soviet heritages. Outstanding production value is combined with expertise in creative solutions personalized for your production needs.

You are warmly welcome!

Southern Bridge in Riga, Latvia



# NORTH STAR FILM ALLIANCE

The Estonian Film Institute, partnered with the City of Helsinki and Riga City Council are the organizations behind North Star Film Alliance (NSFA). Our associate partners are Business Finland, National Film Centre of Latvia and the Film Service Producers Association of Latvia. The best friends to have in production while around here!

## PROJECT PARTNERS:

### ESTONIA

**Estonian Film Institute (EFI)** is a national foundation, financed mainly by the Ministry of Culture. EFI supports development, production and distribution of films, promotes Estonian films, film industry and film heritage, and establishes and develops international contacts. For more info please follow @estfilm on Facebook.

Project Country Manager  
**Ettie Mikita**

Contact:  
**Eda Koppel**  
[eda@filmi.ee](mailto:eda@filmi.ee)

US Office  
[hello@nsfa.film](mailto:hello@nsfa.film)

### FINLAND

**The Helsinki City Executive Office** serves as the initial point of contact for all international queries related to filming in Helsinki, the capital of Finland. We can act as the primary link to the local authorities and audiovisual industry in the Helsinki area. For more info please follow @filmihelsinki on Instagram and Twitter.

Project Country Manager  
**Pia Naarajärvi**

Contact:  
**Taina Seitsara**  
[taina.seitsara@hel.fi](mailto:taina.seitsara@hel.fi)

Japan Office  
[japan@nsfa.film](mailto:japan@nsfa.film)

### LATVIA

**The City Development Department of Riga City Council** works on ensuring sustainable development planning of the capital city of Latvia and promoting the competitiveness of the city economy. That includes providing incentive for foreign film productions. For more info please follow @filmriga on Facebook.

Project Country Manager  
**Laura Frinberga-Tuklere**

Contact:  
**Dace Lešinska**  
[info@filmriga.lv](mailto:info@filmriga.lv)

# YOU ARE HERE SOONER THAN YOU THINK!

## THE NSFA COUNTRIES

### ESTONIA

Population: 1.3 million

Capital: Tallinn

Connectivity: Tallinn - Helsinki  
2h by ferry

🌐 [filmestonia.eu](http://filmestonia.eu)

### FINLAND

Population: 5.5 million

Capital: Helsinki

Connectivity: Helsinki - Riga  
1h by plane

🌐 [filminginfinland.fi](http://filminginfinland.fi)

### LATVIA

Population 1.9 million

Capital: Riga

Connectivity: Riga - Tallinn  
4h by car

🌐 [filmlatvia.lv](http://filmlatvia.lv)



# COST-EFFECTIVE PRODUCTION

A competitive cost base for film and TV that offers high production value, skilled regional crews and talent, professional services and equipment, providing solutions to your creative demands. Compared to most Northern European countries, at a fraction of the cost.

Choose from our generous and transparent national and regional incentives and say yes to our fast decision-making and cash rebates with Latvia offering up to 50%, Estonia up to 30% and Finland 25% for costs incurred in the respective countries.



# TOP-NOTCH TECHNOLOGY.

Trailblazers when it comes to innovation, a lot of bright ideas have come out of our corner of the world enhancing the everyday and filmmaking.

Skype, e-residency and Digital Sputnik LED technology loved by Werner Herzog and Hollywood studios were developed in Estonia.

Finland is home to Nokia, Angry Birds and provide some of the world's best drone pilots to get a perfect bird-eye shot even in severe conditions. Latvia is equally known for their machine translator extraordinaire Tilde and BLUE microphones, masterminds in quantum physics, robotics, as well as they are pioneers in

drone piloting. AirDog is one of the world's first producers of commercial drones operating the auto-tracking function and the first human drone flight and jump from a high altitude (360 yd) was made by a Latvian stuntman.

Camera, video and lighting suppliers provide equipment from Steadicams to ARRI's and world renowned LED lights. We have a great working relationship with the largest camera and tech rental companies in the region to arrange any extra supply in a day.



# EXPERIENCED FILM PROFESSIONALS

Estonia, Finland and Latvia are home to highly educated, skilled professionals, committed to their craft. Local companies offer 360° production, which places a vast array of skills at the fingertips of the client. When higher level of requirements and more flexibility is needed, it's not a problem—the possibility to use additional capacity from regional partners means there are always skilled cast, crew and equipment available. Local crews speak fluent English and our climate has given us a natural perseverance, shaped by the challenging conditions.





# LOCATION SCOUTING SERVICES

Obtain a shooting permit in 2-7 days with minimal red tape and less bureaucratic hoops to jump through.

The region offers a variety of location services including location moods & proposals, creative scouting, permissions and deals negotiation and set management.

Hüpassaare bog, Estonia



# PRODUCTION SERVICES

North Star Film Alliance connects you with national and regional commissions, specialists and unions of the region through our professional network with practical skills and a vivid fantasy.

Art departments can time travel from the present to the past and future. Professional background for post-production services including digital dailies, editing, color grading and vfx supervision. Professional sound recording and mastering using industry-standard facilities. VR and game development services.

Our animation dates back to the 1950s and emerges with innovation and focus on design aesthetics. New-era production companies offer drawn animation, live-action, mixed animation, stop-motion and digital 2D to CGI.

Our talents in film field can be Emmy awarded, Oscar nominated, ADC\*Europe gold awarded or best rated game developers in the world.



# SOUND STAGES

The sound stages in our region offer spaces to build and control any kind of environment. We have state-of-the-art equipment, adaptable backlots and a choice of different sizes stages. Whether your production requires a water tank, a 360-degree shooting backlot, modern sound stage or a small photoshoot studio, you can find a facility to fit your need and budget.

## ESTONIA

The all new purposely built, Tallinn Film Wonderland studio complex is due to open in the beginning of 2022. It will have 28,524 square feet of state-of-the-art 3 sound-stages and ancillary spaces available. Two biggest halls are combinable and 45 feet high.

Tallinn Film Wonderland, Estonia





# FINLAND

Sound stage structures in Finland include:

Helsinki region

- Angel Films (Arabia 135 2 sound stages, 8,611 2,690 ft<sup>2</sup> and Studio30 sound stage 8,611ft<sup>2</sup>)
- Director's Cut (4 sound stages, 4,843 3,229 1,614 and 10,763 ft<sup>2</sup>)
- Helsinki Airport Studios (3 sound stages, 12,916 8,072 and 3,229 ft<sup>2</sup>)
- Valofirma (3 sound stages, 4,843 2,475 2,906 ft<sup>2</sup>)

Tampere

- Mediapolis (6 sound stages, 4,650 3,681, 947 (XR), 12,916 1,431 2,131 ft<sup>2</sup>)
- Aku's Factory (2 halls, 16,145 and 3,229 ft<sup>2</sup>).

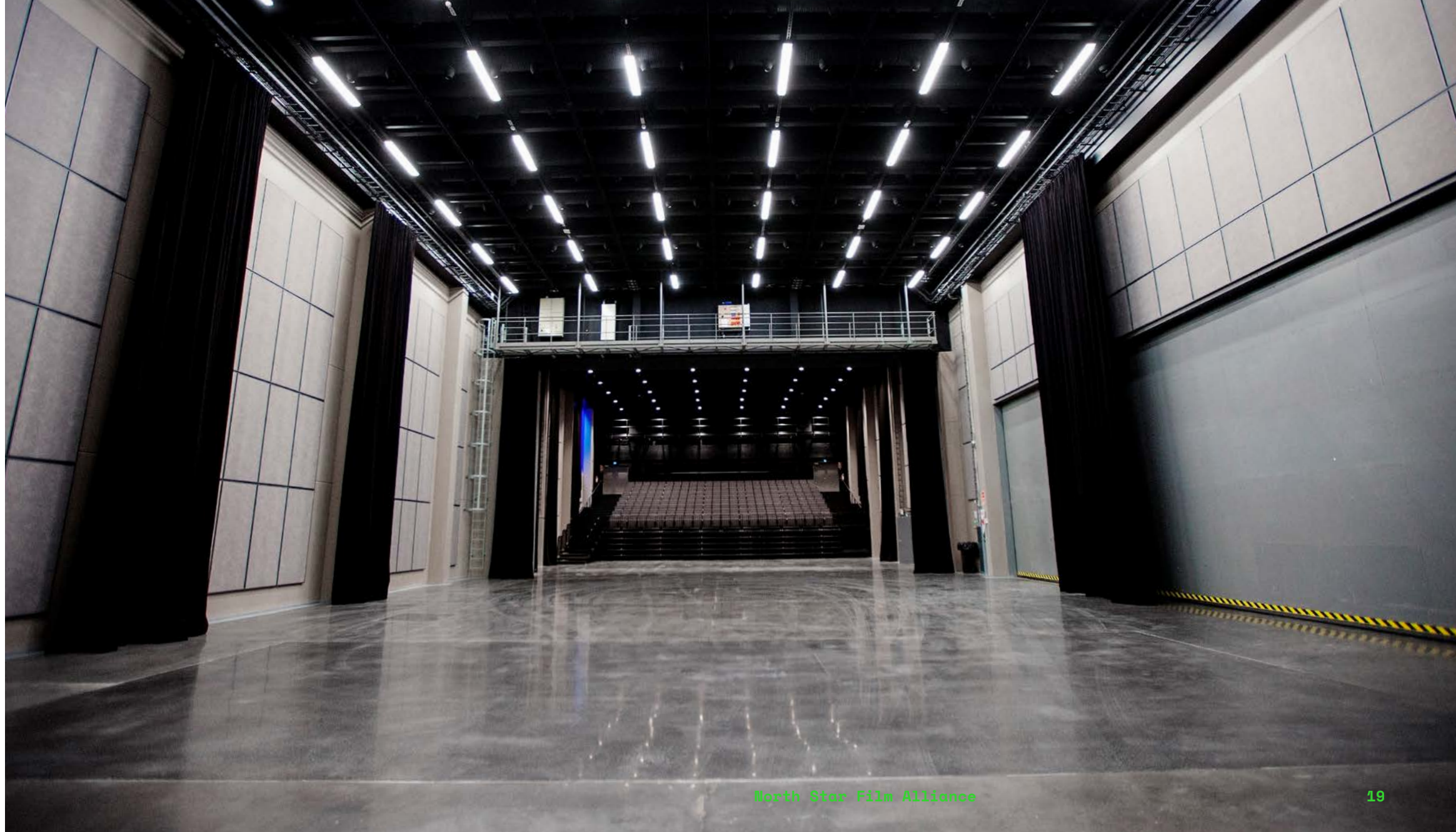
Turku

- Logomo (6 halls)

Nakkila

- Villilä (1 sound stage, up to 9,256 ft<sup>2</sup>)

During the pandemic the largest convention center in the country, Helsinki Messukeskus, is also offering ca. 400,000 sq. ft. in available stage space, located in the heart of Helsinki.





# LATVIA

There are 3 sound stages available in Riga city.

- Stage Nr 1 - 10,634 ft<sup>2</sup> with water tank
- Stage Nr 2 - 8,611 ft<sup>2</sup> with green screen
- Stage Nr 3 - 1,614 ft<sup>2</sup>

Backlot studio Cinevilla is located close to the capital Riga. As well as other historical Latvian cities, Cinevilla specializes in early 20th century buildings, but can be adjusted to older periods. Large-scale scenery covers about 37 acres, plus over 247 acres of adjoining land. 196 feet long railway platform with a vintage steam locomotive and passenger railcars is available surrounded by a church, canal and historic bridge.

Cinevilla, Latvia





# CASH REBATE – FAST AND EASY

Our incentives are as generous as your favorite grandma. Easy money does exist - our cash rebates are 25-50% cash back and no deadlines.

- **Open deadline**
- **Processing of applications within 40 days**
- **Payments done within 3 weeks**
- **Applications by local producers**
- **Eligible expenses based on local goods, services, rentals and taxed salaries.**
- **Support for feature films, TV drama / scripted TV, documentaries, animation, post-production.**

## CASH REBATE INFO \*

\* For possible (annual) updates please check with respective producers or funds.

Country	ESTONIA	UP TO 30%	FINLAND	25%	LATVIA	UP TO 50%	
Name of incentive	Film Estonia production incentive		Business Finland Audiovisual Production Incentive		Latvian Co-Financing Fund of the National Film Center	Riga Film Fund co-financing by the Riga City Council	
Support intensity	20% - 30% depending on Estonian expenditure and number of Estonian creative staff engaged		25% for above and below-the-line expenditure		20 - 30% depending on expected tax payments in Latvia	20 - 25% max when Riga features as Riga	
Annual budget euros	2 000 000 (not capped)		10 600 000		1 158 000	800 000	
Eligible	Feature						
	Feature documentary						
	TV drama / scripted TV						
	Animation (short, feature, series)		Animation				
	Post-production of above-mentioned works						
Application eligibility	Minimum overall budgets [and minimum local spend]						
	for feature films	€1m [€200,000]	€2.5m [€150,000]		€711,436 [no minimum local spend]	€700,000 [no minimum local spend]	
	for animation films	€250,000 [€70,000]	€5,500 per minute [€250,000 in total]				
	for animated series	€500,000 [€70,000]					
	per episode for TV series	€200,000 [€70,000 in total per series]					
	for documentaries	€200,000 [€70,000]	€325,000 [€50,000]		€142,287 [no minimum local spend]		
	local spend for post-production	€30,000					
	Participation of a local production services company or a local co-producer						
	An application can only be made when 50% of the funding is confirmed.		An application can only be made when 60% of the funding is confirmed.		An application can only be made when 50% of the funding is confirmed.		
			Distribution agreement for one platform or one territory				
		Content that was filmed abroad is eligible to apply for a rebate for post-production costs in Finland					
Web/Contact	www.filmestonia.eu / nele@filmi.ee		www.businessfinland.fi / productionincentive@businessfinland.fi		www.filmlatvia.lv / nkc@nkc.gov.lv	www.filmriga.lv / dace.lesinska@riga.lv	
Additional	3 regional funds based on regional expenditure: the Islands, Tartu and Viru		3 regional funds based on regional expenditure: Film Tampere, West Finland Film Commission, East Finland Film Commission		Can be combined with Riga Film Fund	Can be combined with Latvian Co-Financing Fund	



# LOCATIONS

The NSFA region offers wonderful natural contrasts and cityscapes at the crossroads between the East and West.

Short distances and low population density make it easy to shoot in up to 4 different locations per day.



Turku Cathedral by River Aurajoki, Finland





# DIVERSE AND UNIQUE NATURE

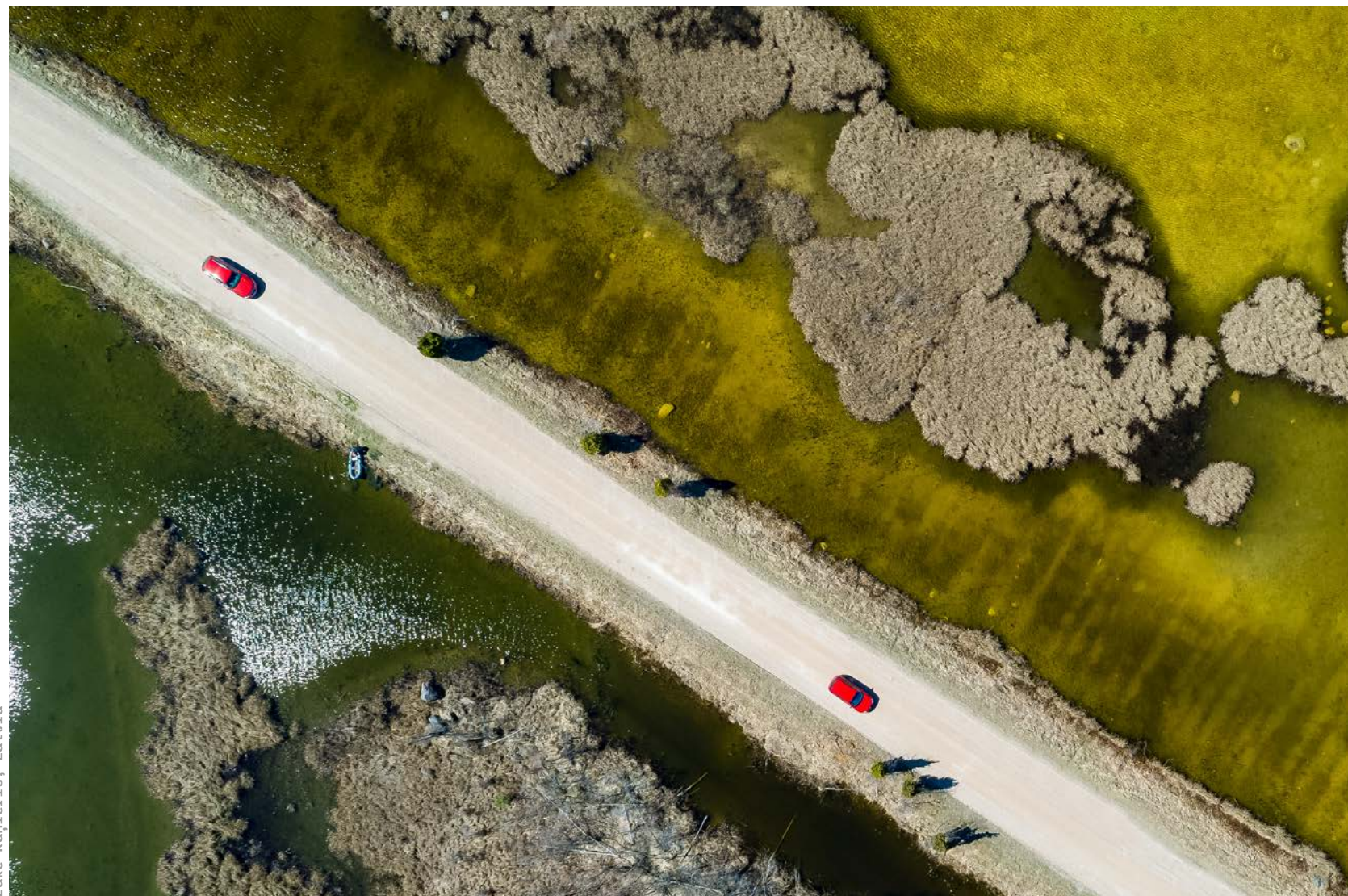
The region's nature is one of Europe's best kept secrets, brimming with natural locations just waiting to be caught on camera.

A variety of rare, yet accessible and pristine locations.





Männiku, Estonia



Lake Kanieris, Latvia



# FAMED FOR PEACE AND QUIET

Amongst the world's safest and most politically stable countries, with small populations and plenty of space - if you're looking for a harmonious shooting atmosphere that can be kept under wraps, you've found it here.

All three countries offer lots of locales away from the bustle of busier hubs, and places with near zero light pollution.



Lapland, Finland



Reservoir Kārļi, Latvia



# SNOW & ADVENTURE

Fortress of Suomenlinna that belongs to  
the UNESCO World Heritage Sites.

Suomenlinna, Finland

Lapland, Finland



# LAKEs

Surrounded by the lengthy coastline of the Baltic sea, hundreds of thousands of lakes (for real!) and expansive bog fields. The whole region boasts of rivers and waterfalls, Latvians settled themselves next to the widest waterfall in Europe.

Heisinki, Finland

Äntu Sinijärvi, Estonia



# SEASIDE

Estonia and Latvia have breathtaking seaside cliffs and limestone beach banks running 745 miles long, while Latvia's exclusive and continuous sandy beaches are 310 miles long.

Cape Kolka, Latvia

Keri Island, Estonia





# ISLANDS

Estonia and Finland are known for their stunning and accessible archipelago. Estonia has a total of 2,355 and Finland 179,584 islands and islets. These dense groups of islands, some inhabited and many rural and rugged, also provide special locations such as ferries and lighthouses.







Mõmmemetsa, Estonia

# DESOLATE



Lake Jugla, Latvia

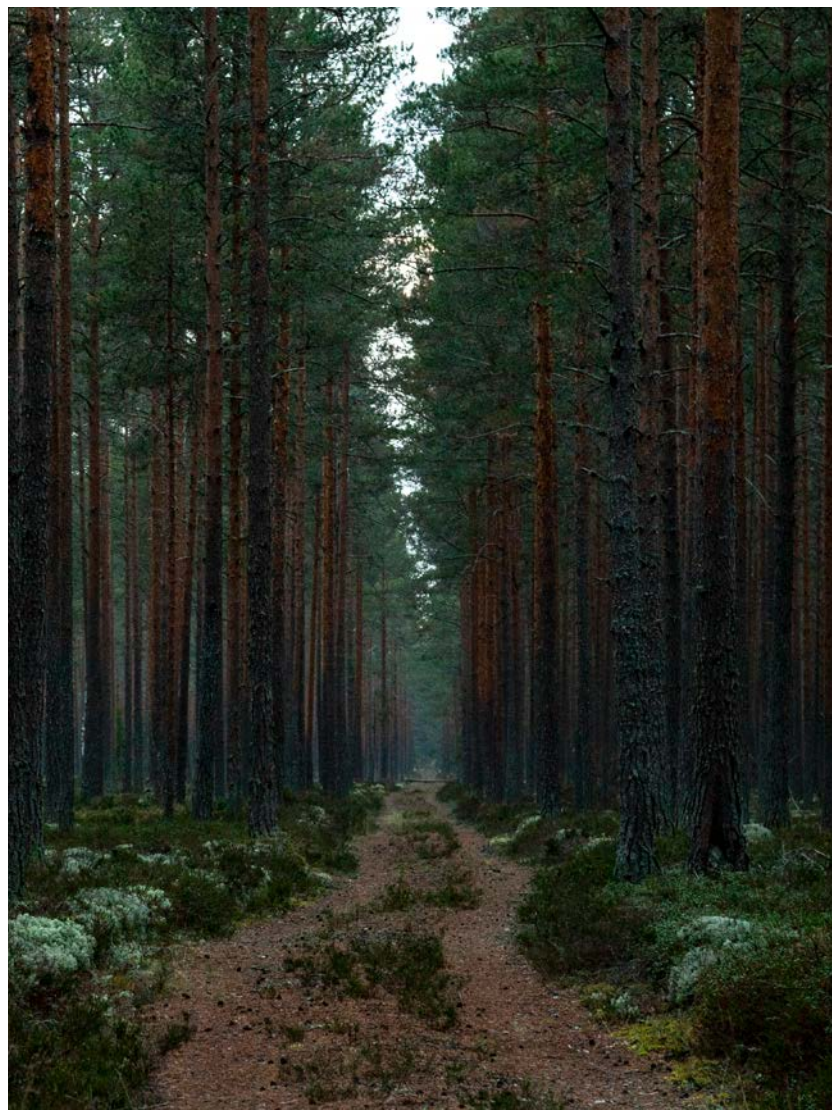
# LANDSCAPE

Lights! Camera! And an undisturbed shoot guaranteed also during the holiday seasons.



# FOREST

Nicknamed as the region's gold(mine), untouched expanses of woodlands of broadleaf or pine and spruce, cover nearly half of the region.



Kaberneeme, Estonia

# COUNTRYSIDE

Rustic countryside or rugged wilderness are plentiful. Rural Estonia and Latvia have a European feel, while Finland's farmlands are more Nordic looking, mixed with unspoiled arctic landscapes.



Finland

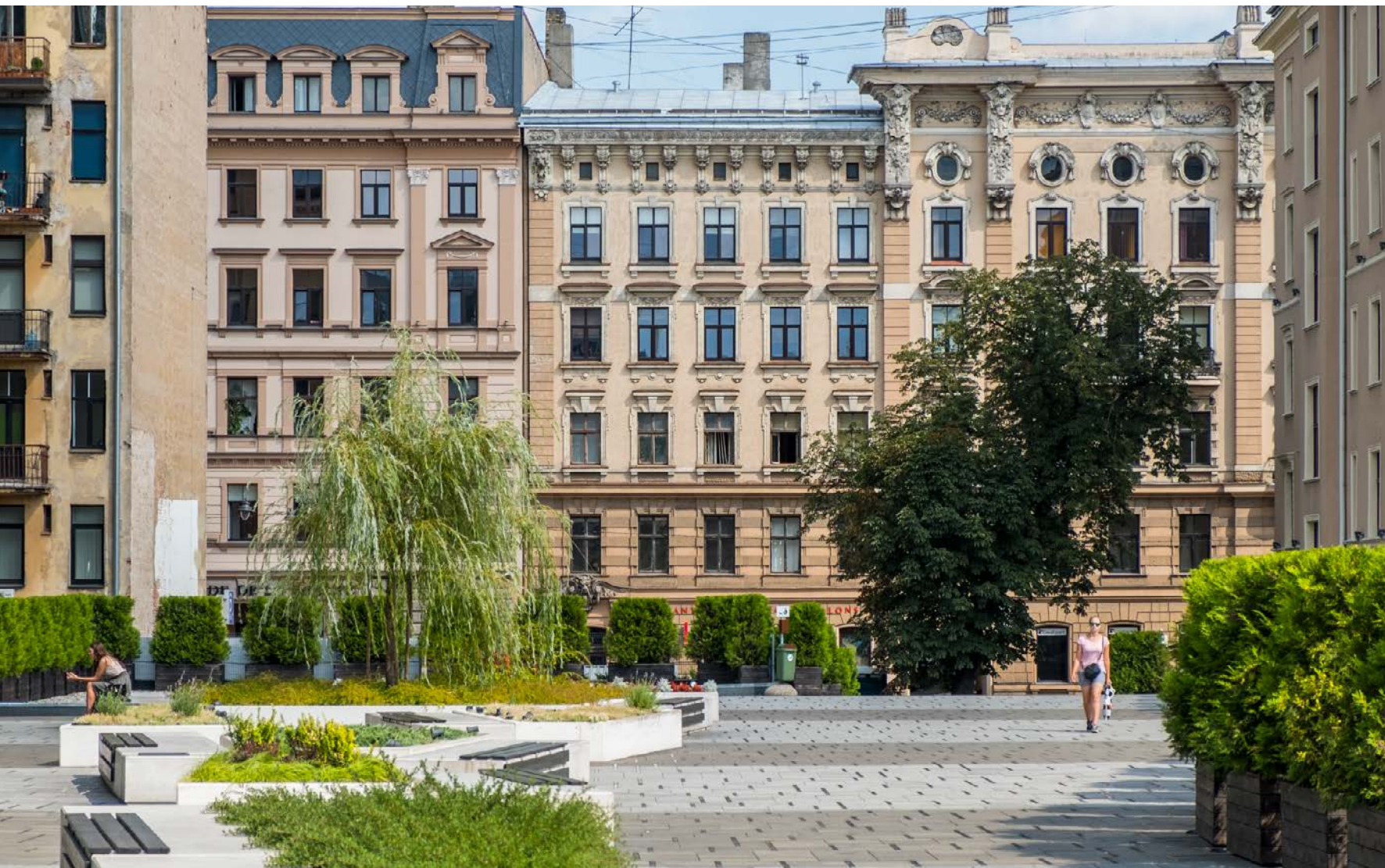


# NORTHERN LIGHTS

The region's northernmost tip, Lapland, is one of the few sure-snow locations in Europe. Thick white snow is guaranteed for months, making the scheduling of winter shoots more reliable. And if lucky you will see the northern lights. The season for the northern lights runs from October to April, and peak snow season is in March.







Riga, Latvia



Riga, Latvia

# ARCHITECTURE FOR EVERY SCENE

Thanks to a rich history of Russian and Nordic influence, the NSFA region has an architectural backdrop and mood for every angle. It offers everything from medieval towns and Tsarist cathedrals to gritty Soviet era sites and contemporary cities. Perfect for period films, modern Western European and Russian scenes alike.

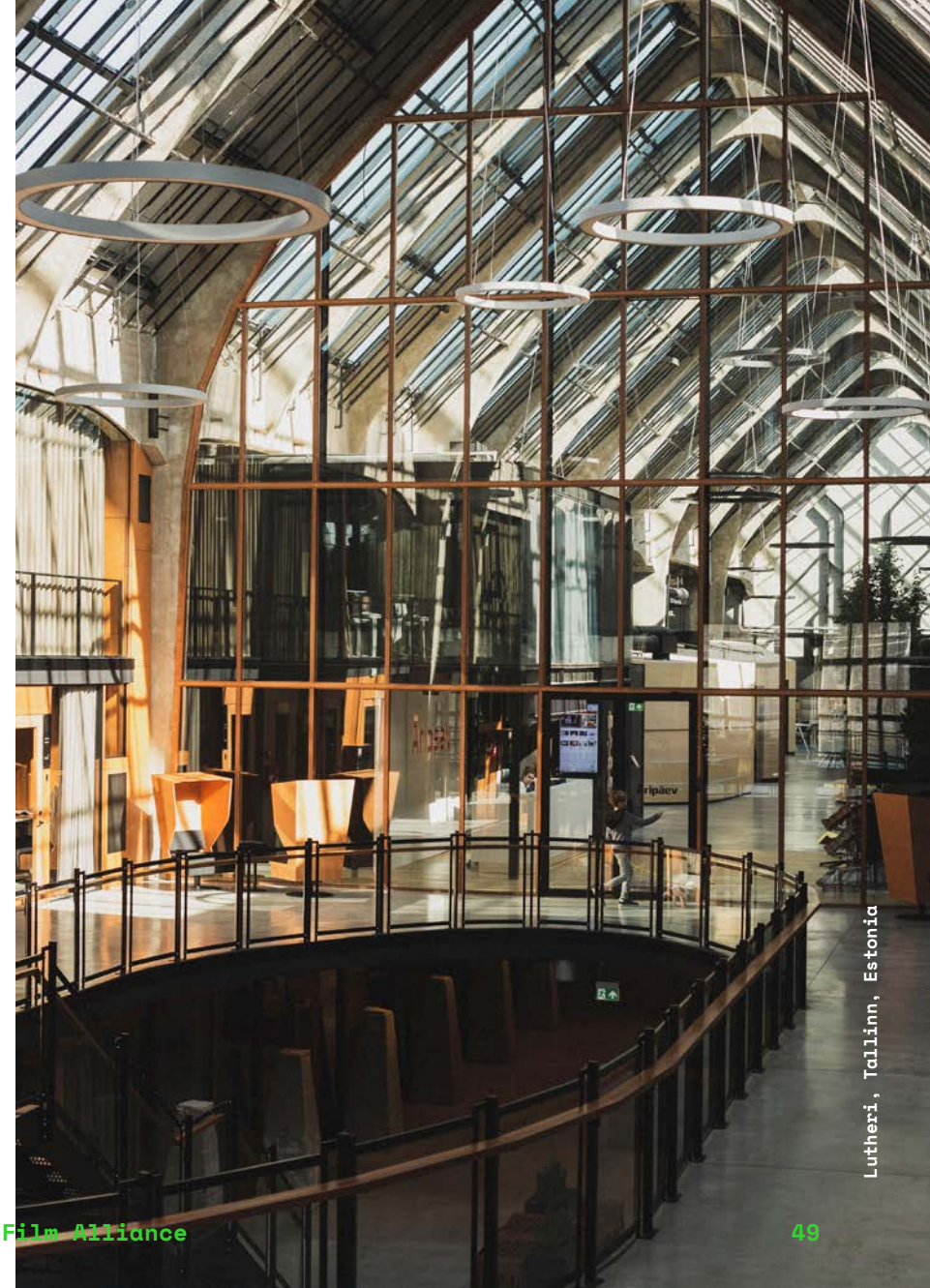




# MODERN & MIXED ARCHITECTURE

The region has urban and metropolitan areas ranging from glamorous to gritty. Places which have kept their original texture and time-worn charm as well as contemporary sites. Inventive, ambitious and spectacular modernist architecture can be found in Tallinn, Helsinki is a modern city with several architectural legacies by Alvar Aalto and the quantity and quality of Art Nouveau or Jugendstil prevalent in Riga is unparalleled in the world.

Amos Rex, Helsinki, Finland



Lutheri, Tallinn, Estonia





Helsinki, Finland



KUMU, Tallinn, Estonia  
Löyly, Helsinki, Finland







North Star Film Alliance

North Star Film Alliance

Oodi, Helsinki, Finland



# WHEN HISTORY INTERTWINES WITH MODERNITY



Tallinn, Estonia

Riga, Latvia





# INDUSTRIAL

Large industrial areas in Estonia and Latvia for a gloomy ghost town feel. The oil shale mines, open pits, ruins and factories date back to the 19th century.





Ida-Virumaa, Estonia



Cellars of Riga Central Market, Riga, Latvia





# ERA SPECIFIC

An immaculate portrait of a certain time or an eclectic remix of eras. Create a traditional Old European feel or explore the creative possibilities.





Helsinki, Finland



Porvoo, Finland

Wooden architecture is plentiful and still intact in many cities of the region.

Finland has preserved picturesque 18th century wooden houses in Porvoo.

Well kept, charming wooden houses that belong to the UNESCO World Heritage Sites line up in Tallinn, Riga and Jurmala. Some scattered around next to the harbors, at romantic riversides and in tiny sleepy villages, or situated next to a prestigious presidential palace - a castle dedicated by a Russian tsar to his wife Catherine the Great.





Tallinn, Estonia



Jurmala, Latvia





Art Nouveau, Riga, Latvia



Tartu, Estonia





Viljandi, Estonia



Helsinki, Finland



# UNESCO HERITAGE OLD TOWNS

Impressive medieval towns preserved in time and guarded by the UNESCO World Heritage at your disposal. Cobblestone streets, red rooftops and colorful houses dating back as far as the 11th century.





Soothe your eyes with brilliantly restored, wooden and red-brick architecture dating back centuries.



Kuldīga, Latvia



Tallinn Old Town, Estonia





Founded in 1201, the largest Baltic medieval old town with its 13th century churches and surroundings is designated as a UNESCO World Heritage Site.







Veski Villa, Tartu, Estonia

# MANORS & PALACES

Keila-Joa manor, Keila-Joa, Estonia



Manors and palaces, both elegant and rustic, are plentiful in number and style. Baroque, Rococo, Classicism- we have it in our region.









Rundāle palace, Latvia



Rundāle palace, Latvia







# MEDIEVAL CASTLES

Medieval and Neo-Gothic castles and fortifications, many in pristine condition, are available for productions. All three countries have cathedrals dating back to the 13th century. Estonia and Latvia have centuries-old monasteries.

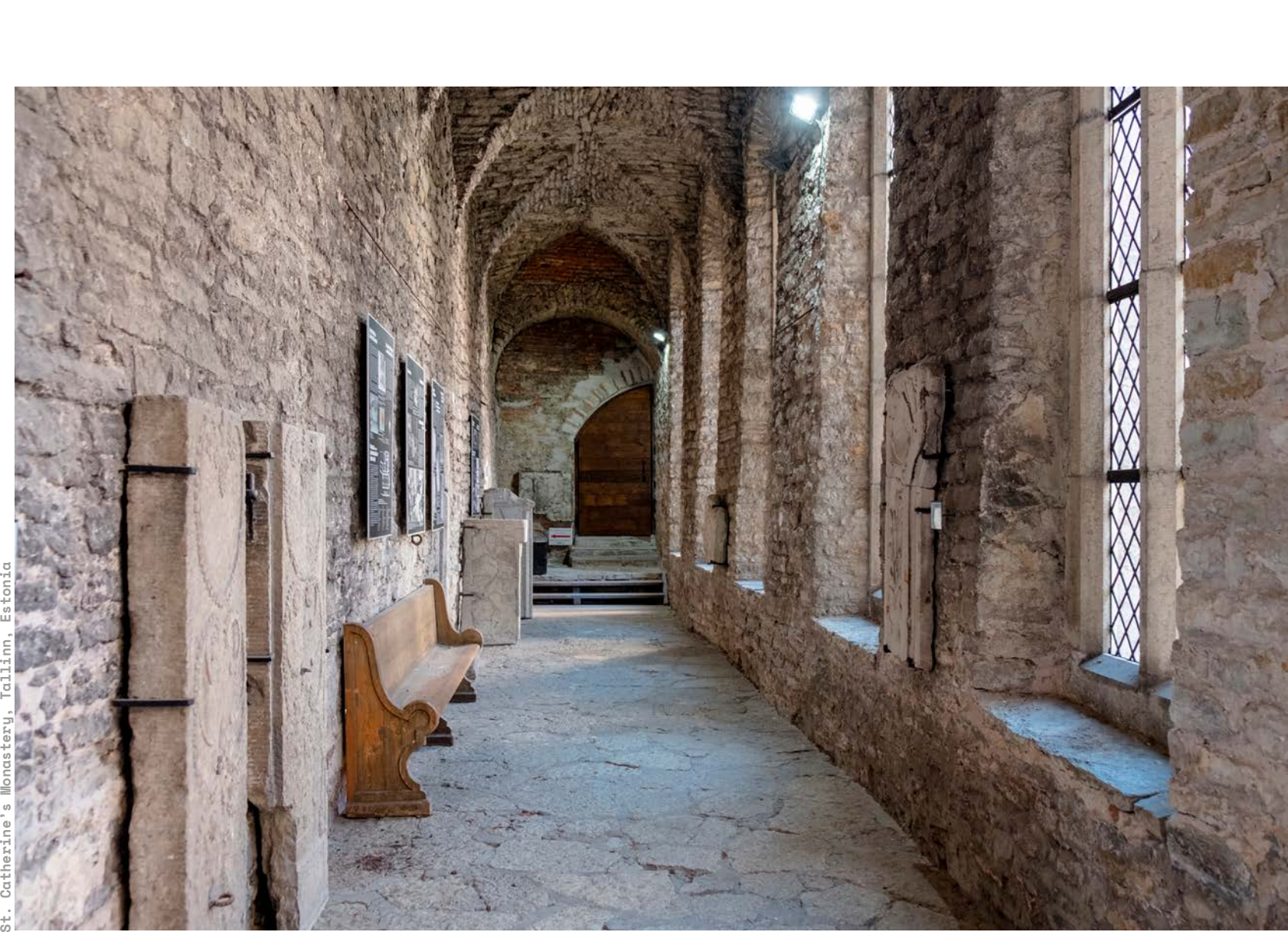






Medieval castle in Estonia.

Kuressaare Castle, Estonia



St. Catherine's Monastery, Tallinn, Estonia







# SOVIET HERITAGE

From monumental public buildings to pre-fabricated concrete apartment blocks, the Soviet era has left a distinctive mark on the architecture in parts of the region. Military remnants include garrison areas and ruins of naval and army bases.

Jurmala, Latvia

North Star Film Alliance



Academy of Sciences, Riga, Latvia

North Star Film Alliance



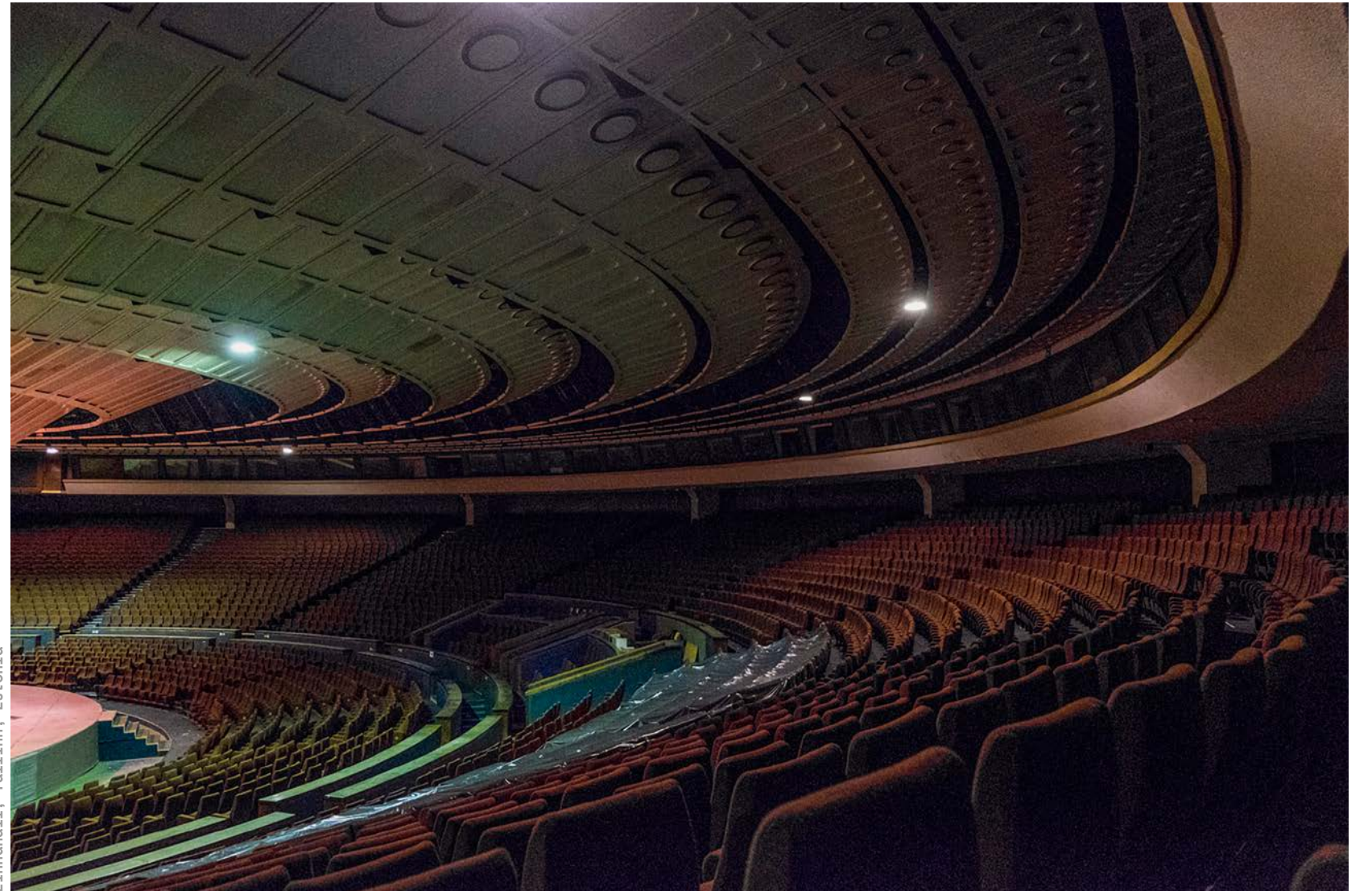


"Bedroom community" during the 1970s hosts blocks of tall Soviet-era concrete buildings – a backdrop with many possible perspectives.





Jurmala, Latvia



Linnahall, Tallinn, Estonia



# FOUR SEASONS

A true diversity of distinct seasons- frozen winters, a blooming springtime, summers of immersive light, vivid autumns and a unique flat relief flood dubbed as the “fifth season”.

Lapland, Finland

Kemer National Park, Latvia



# CLIMATE

## ESTONIA

The climate is temperate and mild, characterised by warm summers and fairly severe winters. The weather is often breezy and humid due to the proximity of the Baltic Sea. The average temperature in winter is around  $-6^{\circ}\text{C}$  and  $+20^{\circ}\text{C}$  in summer.

## FINLAND

Frosty winters and mild, moderately rainy summers. In Finnish Lapland, winter lasts for half the year. A permanent blanket of snow covers the ground—usually by November. Average temperature is around  $+21^{\circ}\text{C}$  in the summer and ranges from  $-6^{\circ}\text{C}$  -  $-17^{\circ}\text{C}$  in the winter.

## LATVIA

The climate of the Latvia can be described as a typical European continental influenced climate with warm, dry summers and fairly severe winters. The average winter temperature is  $-6^{\circ}\text{C}$  and the average summer temperature is  $+20^{\circ}\text{C}$ .





Great Kemer Bog, Latvia

# 5 MAGIC HOURS AND ETERNAL NIGHT



Järsi, Estonia

An endless day or an eternal night? Here, you can have both.

The summers make up for the sunlight missed during the region's long winters, granting additional shooting time of up to five "magic hours" and the feeling of ever-present daytime. Starting from 18 hours, the further north you go, the longer the midnight sun, with even a period of round the clock daylight above the Arctic Circle, taking place from May until July.

Winter welcomes a blue period lingering over the long dawns and dusks. Daylight is scarce, up to 7 hours, with places where the sun doesn't rise above the horizon at all. Keeping the steady focus for night shoots.

A real magic to exploit.



# PRACTICAL

# ABOUT THE REGION

## Time Zone

All of the NSFA region is in the Eastern European Standard Time zone (GMT+2). Due to daylight saving time, it's GMT+3 in winter.

## Currency

Euro is the currency of all countries in the NFSA region.

## Language

English is widely spoken in the region.

## Transportation

The region has excellent flight connections. Distances between locations can be travelled by car. The roads are in excellent to good condition.

## Power system

In all of the region, power plugs and sockets are European standard type F. The standard voltage is 230 V and the frequency is 50 Hz. The electric supply is perfectly reliable.



# INFRASTRUCTURE

Highly modern, the region's countries are among the most connected in the world. Broadband and wireless are available everywhere. 4G networks cover even the forests and islands.

## PERMITS AND VISAS

Local production services and partners will handle the shooting permits and help with the permit and visa applications. In general, there is little red tape in the region.

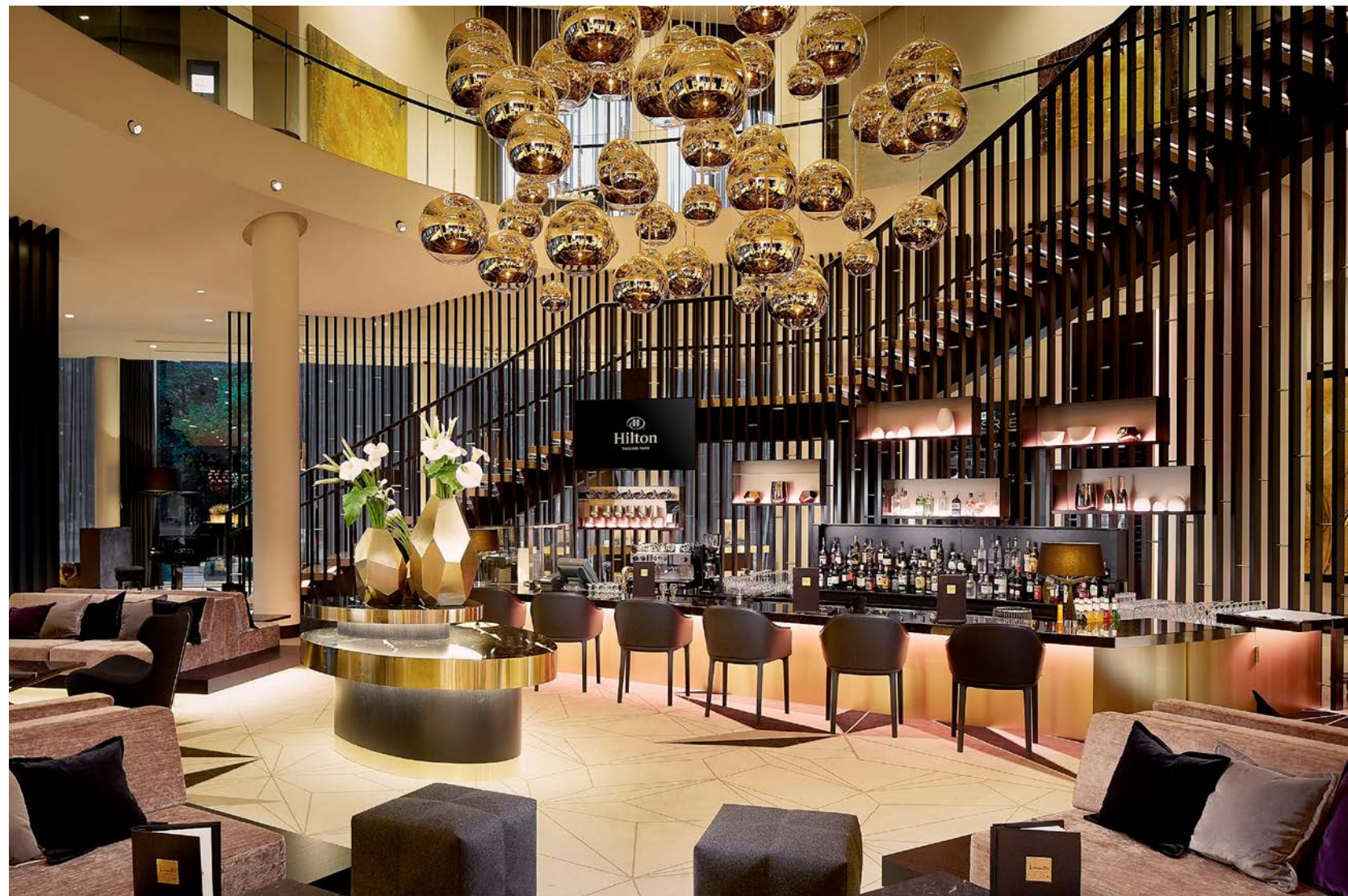
## TRANSPORTATION

Easy to navigate, the well-organized and flexible transportation options connect the region within and link it to the world.

Nonstop and direct flights to and from North America. Helsinki is the European hub to Asia and offers the most direct flights, as well as easily accessible flights to Europe and Africa. Lapland is considered to be the most connected wilderness in the Arctic. Riga Airport connects over 100 destinations. Estonia has “the coziest” aerial gateway and ferry connection with Latvia and Finland, both a 30 min flight away. All welcome ships into their capital city docks daily, the Port of Tallinn serving over 10 million passengers a year.

Great transportation links within the region by bus, train and car make travelling fast, and reliable.





Hilton Hotel, Tallinn, Estonia

# ACCOMMODATION

Energizing high-quality rest between intense shooting days can be found in every corner of the region. Within convenient proximity and in well-connected wilderness.

🌐 [visitestonia.com](http://visitestonia.com)

🌐 [visitfinland.com](http://visitfinland.com)

🌐 [latvia.travel](http://latvia.travel)

Rovaniemi, Finland





# FOOD & CATERING

Catering companies are fluent in intercontinental cuisine, experienced in serving large-scale film productions, including top level international clients.





# PUBLIC FILM FUNDING FOR CO-PRODUCTIONS

Public funding is managed by the main film institutions of Estonia, Finland and Latvia.

## ESTONIA

**Estonian Film Institute (EFI)** is a national foundation, financed mainly by the Ministry of Culture. EFI supports the development, production and distribution of national films and co-productions, promotes Estonian films both domestically and abroad, provides information about the Estonian film industry, film heritage and establishes and develops international contacts.

 [film.ee](http://film.ee)

## FINLAND

**The Finnish Film Foundation** supports and promotes the Finnish film industry by funding professional film production and the exhibition and distribution of films. The foundation is also responsible for the cultural export of Finnish film and provides support for the international promotion of Finnish films.

 [ses.fi](http://ses.fi)

## LATVIA

**The National Film Centre of Latvia (NFC)** is funded by the State budget and reports to the Ministry of Culture. NFC facilitates the development of Latvian film, increasing the accessibility, promoting Latvian film abroad and collaborating with international film funding bodies and policy organizations. NFC grants public support to Latvian films and coordinates the cash rebate for international film productions.

 [nkc.gov.lv](http://nkc.gov.lv)



# FILM COMMISSIONS IN THE REGION

## ESTONIA

## FINLAND

The NSFA region offers a variety of publicly funded centralized and more regional incentives.

### Film Estonia

production incentive supports the production of feature films, feature documentaries, animation films, animation series, high-end TV-drama and the post-production of all aforementioned works. A cash rebate up to 30% on eligible production costs can be obtained. The incentive support scheme is managed by the Estonian Film Institute.

🌐 [filmestonia.eu](http://filmestonia.eu)

### Film Fund of Estonian Islands

co-finances foreign audiovisual productions and production services filming on the magical islands of Saare Country, listed as a UNESCO biosphere reserve area. It is a young developing regional fund with a cap of 10 000 euros. Applying for a cash rebate for locally incurred costs is on an on-going and first come, first served basis. It is managed by the Saaremaa Development Centre and funded by Saaremaa Municipality.

🌐 [minusaaremaa.ee](http://minusaaremaa.ee)

### Tartu Film Fund

is a regional film fund promoting Tartu County as a location and post-production destination for international productions with an annual budget of 150 000 €. It offers a cash rebate programme to cover a maximum of

20% of qualifying expenditure in Tartu County. Applications for a rebate for feature films, TV drama, documentaries, shorts and animation can be submitted on an on-going basis. A member of Cine-Regio, a network of regional film funds in Europe and administered by the Tartu Centre for Creative Industries.

🌐 [tartufilmfund.ee](http://tartufilmfund.ee)

### Viru Film Fund

is Estonia's first regional fund and functions as a cash rebate based in the Eastern region known for large-scale industrial and mining infrastructure, but also plenty of untouched natural habitats. The Viru Film Fund finances locally incurred costs for audiovisual productions with an annual budget of 200 000 €. The fund aims for maximum flexibility, with no minimum spending requirements and no artistic criteria imposed on applicants. The application period lasts from February until October and projects will be handled on a first come, first served basis. The fund is open to legal entities established in professional audiovisual production, but no restrictions as per legal residency.

🌐 [virufilmfund.ee](http://virufilmfund.ee)

### Audiovisual Production Incentive

administered by Business Finland is the main cash rebate scheme with a maximum of 25% cash rebate for production costs in Finland. It supports international feature films, documentaries, animation and series. The annual budget is 12 million euros.

🌐 [businessfinland.fi/en/cash-rebate](http://businessfinland.fi/en/cash-rebate)

🌐 [filminginfinland.fi/cash-rebate/](http://filminginfinland.fi/cash-rebate/)

### Regional film commissions in Finland

The following regional commissions provide assistance, including location scouting and help in finding production services to suit your needs.

🌐 [filminginfinland.fi/filming/regions](http://filminginfinland.fi/filming/regions)

### Finnish Lapland Film Commission

Unspoiled Arctic landscapes, village scenes, snow and ice, and breath-taking light shows in the sky are just some of the locations that the Finnish Lapland Film Commission can offer productions interested in filming in the great north. Due to Lapland's long tradition as a hub of tourism, accessibility and services are excellent all around Lapland. While filming in the wilderness, you can practically fly into an Arctic landscape and then rest in a high quality hotel.

🌐 [filmlapland.fi](http://filmlapland.fi)

### North Finland Film Commission

Frozen harbors, Siberian tundra, northern industrial milieus and wild unspoiled nature... ever fancy filming in such a location? It is possible to shoot such scenes close to the necessary production amenities in Northern Finland. The North Finland Film Commission serves production teams by offering local expertise and a reliable cooperation network across the region.

🌐 [nffc.fi](http://nffc.fi)



# FINLAND

## East Finland Film Commission

Vast forests and seemingly infinite lake settings, as well as the consistent winter environment, serve as an inspiration for filmmakers in East Finland. Small towns are easily accessible and boast a variety of functional and disused factories and mills that offer potential as locations and backdrops. The East Finland Film Commission promotes the unblemished beauty of the region and coordinates the local infrastructure for visiting productions.

🌐 [effc.fi](http://effc.fi)

## West Finland Film Commission

Close to the largest archipelago in the world, West Finland offers production companies a uniquely beautiful production environment amid a medieval city milieu. From a dense group of islands, some inhabited and others rural and rugged, to country villages and technology hubs, it is a place for productions of all sizes.

🌐 [wffc.fi](http://wffc.fi)

## Film Tampere

Tampere is in the heart of Finland: easy to reach, work and to create. Tampere offers regional cash rebates and adaptive filming locations all year round. The red brick industrial heritage, rapids, and many lakes, offer distinctive locations for productions. Tampere has several modern, big, and fully equipped studios, using the latest technology. We have strong talent in post-production and special effects.

🌐 [filmtampere.com](http://filmtampere.com)

## South East Finland Film Commission

SEFFC welcomes film, commercial and television productions to shoot in South-Eastern diverse landscapes and to make use of the country's high-standard infrastructure and skilled professionals.

🌐 [seffc.fi](http://seffc.fi)

## The Latvian Co-financing Fund

coordinated by the National Film Centre is a national cash rebate scheme up to 25% granted to international productions through the State budget.

🌐 [nkc.gov.lv/en/co-financing-fund-nfc](http://nkc.gov.lv/en/co-financing-fund-nfc)

## Riga Film Fund

is a co-financing program managed by the Riga City Council open to foreign co-productions planning to shoot in Riga and Latvia. Up to 25% of eligible film related expenditure can be obtained for the approved project as a cash rebate when filming is completed.

🌐 [filmriga.lv/en](http://filmriga.lv/en)

# LATVIA



# PRODUCTION COMPANIES

For information on local co-production companies, production services and, for example, crew rates and fringes in the NSFA region, you can contact local producers' unions and associations listed here. They will introduce the most relevant production companies in Estonia, Finland and Latvia.

## ESTONIA

**Estonian Film Institute** represents the contacts of Estonian producers at site

 [filmestonia.eu](http://filmestonia.eu)

## FINLAND

**Audiovisual Producers Finland** – APFI is an association that represents the interests of Finnish producers and acts as the main link to the audiovisual industry in Finland.

 [apfi.fi/en/home](http://apfi.fi/en/home)

## LATVIA

**Film Service Producers Association of Latvia**

 [filmservice.lv](http://filmservice.lv)

**Film Producers Association of Latvia**

 [filmproducers.lv](http://filmproducers.lv)



# MAIN FILM FESTIVALS AND INDUSTRY EVENTS

The region has a varied offering of international film festivals and networking opportunities. Tallinn's Black Nights Film Festival in Estonia, and Finland's Tampere Film Festival that focuses on shorts, are FIAFP accredited A-list film festivals.

## ESTONIA

Black Nights Film Festival

🌐 [poff.ee](http://poff.ee)

DocPoint Tallinn Documentary Film Festival

🌐 [docpoint.ee](http://docpoint.ee)

## FINLAND

Tampere Film Festival

🌐 [tamperefilmfestival.fi](http://tamperefilmfestival.fi)

DocPoint Helsinki Documentary Film Festival

🌐 [docpointfestival.fi](http://docpointfestival.fi)

Love & Anarchy – Helsinki International Film Festival

🌐 [hiff.fi](http://hiff.fi)

## LATVIA

Riga International Film Festival

🌐 [rigaiff.lv](http://rigaiff.lv)

Riga International Short Film Festival 2Annas

🌐 [2annas.lv](http://2annas.lv)

Baltic Sea Documentary Forum

🌐 [balticseadocs.lv](http://balticseadocs.lv)

**Industry@Tallinn & Baltic Event** is a summit and trade fair for audiovisual industry professionals held annually in November during the Black Nights Film Festival. The Baltic Event Co-Production Market is a meeting place for feature films in development looking for co-producers, financiers and sales agents.

🌐 [industry.poff.ee](http://industry.poff.ee)

**Finnish Film Affair** is an industry initiative of the Helsinki International Film Festival – Love & Anarchy, held annually in September. It's the country's main industry event, attracting sales agents, distributors, festival programmers, TV buyers, and representatives of the press.

🌐 [finnishfilmaffair.fi](http://finnishfilmaffair.fi)

**Riga IFF Forum** happens annually in October during the Riga International Film Festival. A series of lectures, presentations and networking events with an aim to form creative partnerships and bring together film and immersive media.

🌐 [rigaiff.lv](http://rigaiff.lv)



# INTERNATIONAL PRODUCTIONS IN THE NSFA REGION

The NSFA region has enticed filmmakers from Hollywood, Asia and Bollywood, as well as numerous European co-productions. International high-profile productions recently shot in the area include Christopher Nolan's 200 million dollar action adventure Tenet (Warner Bros), the Japanese box office hit Snow Flower (Warner Bros Japan) and Siddharth Anand's War (Yash Raj Film), India's highest grossing blockbuster in 2019. The region has also provided locations and facilities for Bordertown and Deadwind (Netflix/YLE Originals), HBO's Catherine the Great miniseries starring Helen Mirren and first-ever South-Korean musical Hero by director Yoon Je-kyun.

HBO's Catherine the Great miniseries starring Helen Mirren





# NSFA INDUSTRY CONTACTS

## ESTONIA

### EFI

Nele Paves  
Film Commissioner  
**nele@filmi.ee**  
+372 5141014

## FINLAND

### APFI

Anni Wessman  
Head of International  
**anni.wessman@apfi.fi**  
+358 504724148

## LATVIA

### FSPA of Latvia

Jānis Kalējs  
Head of Association  
**info@filmservice.lv**  
+371 29411317

## US OFFICE

**hello@nsfa.film**

## JAPAN OFFICE

**japan@nsfa.film**

# PHOTOS

2-3 Helen Västriik | 6 Ingus Krūklītis | 11 Digital Sputnik Lighting | 13 Miikka Niemi / Flatlight Films | 14-15 Jorma Suumann - SkyCam | 17 Novarc arhitektid | 18-19 Angel Films | 20-21 Mārtiņš Milbrets for Cinevilla, Latvia | 25 Timo Oksanen for Visit Finland | 26-27 Kristjan Lust | 28 Taaniel Malleus | 29 Valdis Skudre | 30 Harri Tarvainen | 31 Valdis Skudre | 32 Arttu Kokkonen | 33 Ugur Arpacı | 34 Raland | 35 Kristo Kaljuvee | 36 Mihails Ignats | 37 Doris Täärer | 38-39 Visit Saimaa | 40 Hannes Paldrok | 41 Valdis Skudre | 42 Kristo Kaljuvee | 43 Jukka Heinovirta | 44-45 Jani Kärppä & Flatlight Films /Visit Finland | 46 Hannes Paldrok | 47 Valdis Skudre | 48 Aleksi Poutanen for Helsinki Marketing | 49 Maria Kaarep | 50 Joakim Jonkasalo | 51 Hannes Paldrok | 51 Pekka Keränen | 52-53 Tuomas Uusheimo | 54 Rasmus Jurkatam | 55 Valdis Skudre | 56-57 Tõnu Tunnel | 58 Kristo Kaljuvee | 59 Toms Norde | 60-61 Agnis Karlsons | 62 Alexandr Bormotin | 63 Niko Laurila | 64 Helen Västriik | 65 Toms Norde | 66 Hannes Paldrok | 67 Hannes Paldrok | 68 Hannes Paldrok | 69 © 2019 Snow Flower Film Partners | 70-71 Hannes Paldrok | 72 Andris Eglītis | 73 Hannes Paldrok | 74 Valdis Skudre | 75 Khrystyna Oliinyk | 76 Hannes Paldrok | 77 Evert Palmets | 78-79 Valdis Skudre | 80 Rundāle Palace | 81 Rundāle Palace | 82-83 Valdis Skudre | 84-85 Visit Finland | 86 Liis Reiman | 87 Hannes Paldrok | 88-89 Ronalds Štikāns | 90 Helen Västriik | 91 Ikars Kubliņš | 92-93 Aleksandrs Kendenkovs | 94 Helen Västriik | 95 Hannes Paldrok | 96 Visit Finland Julia Kivelä | 97 Valdis Skudre | 98-99 Visit Finland | 100 Artis Veigurs | 101 Denis Vinokurov Emelin | 106 Hilton Park Hotel | 107 Arctic Tree House hotel | 109 Renee Altrov | 121 Robert Viġlasky/SkyHBO



# LET'S MAKE A SCENE!

## NORTH STAR FILM ALLIANCE

nsfa.film



RIGA CITY COUNCIL  
CITY DEVELOPMENT  
DEPARTMENT



Associate partners:

Business Finland

National Film Centre of Latvia

Film Service Producers Association of Latvia

@northstarfilmalliance  
#northstarfilmalliance



EUROPEAN UNION  
European Regional  
Development Fund

